



Web: [www.bvnaboise.org](http://www.bvnaboise.org)

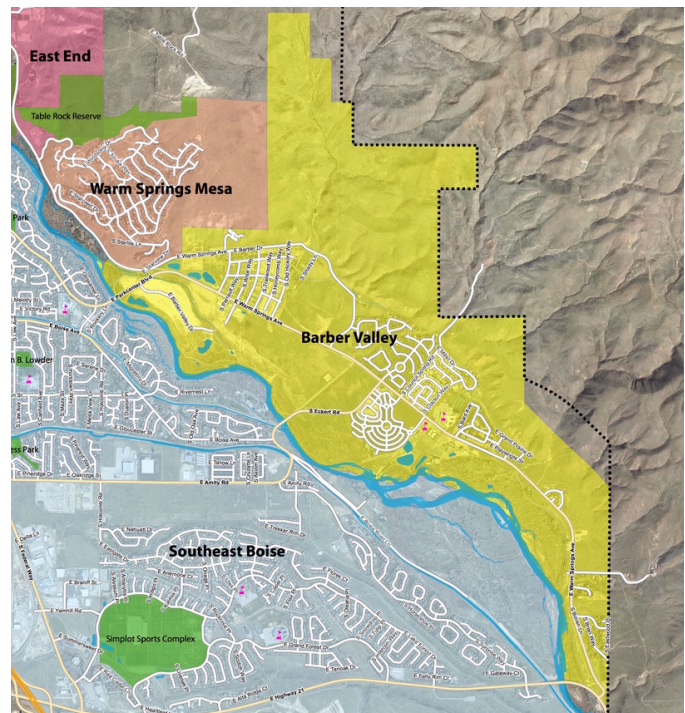
Email: [board@bvnaboise.org](mailto:board@bvnaboise.org)

We'd like to extend to you a warm welcome to the Barber Valley neighborhood – where an active, urban lifestyle meets outdoor recreation opportunities and wildlife conservation. We hope you enjoy living here!

BVNA is a well-run and very active neighborhood association chartered by the City of Boise. We are recognized by Ada County and other local government agencies and serve to represent our neighborhood interests to those local government entities as well as land and commercial development companies seeking to move into this special valley. The BVNA is not a Homeowners Association, which administers internal neighborhood common areas, CC&Rs, and collects fees for landscaping and other amenities. We strive to work collaboratively with the dozens of HOAs here in the Barber Valley. For a summary of the differences between a neighborhood association and a HOA, see: [http://bvnaboise.org/assets/files/NAs\\_HOAs.pdf](http://bvnaboise.org/assets/files/NAs_HOAs.pdf)

**How Do I Get Involved and Stay Informed?** Our goal at BVNA is to help neighbors stay connected and learn about the latest activity that affects you as a member of our great community. We advocate for smart and efficient development of our growing neighborhood and seek to preserve a unique lifestyle in an urban setting sandwiched between two huge wildlife conservations areas. We hold regular monthly meetings and communicate meeting minutes to everyone on Facebook (<https://www.facebook.com/groups/401669773305392/>) and Nextdoor.com. To sign up for our email list, please visit our website at <http://bvnaboise.org/page8.html> and select the appropriate subject from the drop-down menu. We seek a balanced representation from all Barber Valley neighborhoods, old and new, on our Board of Directors. We charter committees to tackle emerging neighborhood issues and currently have active committees dealing with transportation issues, wildfire mitigation and emergency evacuation planning, and open space and park development. Your energy and talents are certainly welcome wherever you'd like to lend a hand!

*The BVNA boundaries are shown in yellow (right). Our association is nestled between the foothills and the river, bordered by Warm Springs Mesa and Highway 21. We are a 'bridge to bridge' neighborhood with entrances at the Parkcenter Blvd bridge, Eckert Rd (Barber bridge), and E. Warm Springs Avenue at the south end of the valley at the Highway 21 bridge.*



**What's up in the Valley?** As you can see by number of new homes throughout the valley, our part of Boise is growing, *and we're not done yet!* Your home is part of a master-planned community that was designed through a collaborative process with Boise City, developers, representatives from seven neighborhoods, Idaho Conservation League, Idaho Department of Fish & Game, Boise Parks & Recreation, Ada County Parks, Idaho Power, local residents, and members of the general public from outside our neighborhood. The purpose was to create a cohesive, walkable, interconnected community with a mix of housing types, open space amenities, and commercial uses. Through many public workshops, the community created two Specific Plans in the Barber Valley Planning Area: SP-01, Harris Ranch; and SP-02, Barber Valley. These plans are part of City Ordinance and seek to balance property rights while providing community amenities, mitigating wildfire risk, and preserving wildlife habitat. However, these two specific plans do not guide development for all parcels in the valley. There are several parcels not included in the specific plans and public engagement is critical when these parcels are considered for development. The specific plans are publicly available, so you know what's coming. Please visit our website's development page <http://bvnaoise.org/page4.html> and links page <http://bvnaoise.org/page10.html> for the good reference docs.

**What about the wildlife?** The foothills meet the river in the Barber Valley, and this is a special place for conservation. Read more about the "Barber Valley Ethic" here: <http://bvnaoise.org/page7.html>. We are fortunate to live between two significant wildlife reserves. The foothills above us are part of the Idaho Department of Fish and Game (IDFG) Boise Front Wildlife Management Area. During winter, deer migrate all the way from the Sawtooth Mountains to enjoy our temperate climate by the river. The SP-01 and SP-02 plans clustered development in certain areas, and left other areas as open space to allow room for wildlife. Corridors are provided through our subdivisions for wildlife passage from the foothills to the river. When you are on designated trails in the foothills, please follow IDFG management guidelines, keep your dog on a leash, and respect closures. To learn more, check out the map at <https://idfg.idaho.gov/sites/default/files/wma-boise-river-map.pdf>, and learn about the wildlife and human uses at <https://idfg.idaho.gov/visit/wildlife-management-areas>. We're also home to the Barber Pools Conservation Area, a wildlife reserve managed by the Idaho Foundation for Parks and Lands. Neighbors are asked to leave this space undisturbed for wildlife; learn more at <http://www.idaholands.org/footer-menu/directors/home/properties/barber-pool/>. Again, there are good reference links here: <http://bvnaoise.org/page10.html>.

If you have any questions that we may help with from a neighborhood perspective, please contact us via email at [board@bvnaoise.org](mailto:board@bvnaoise.org) or our contact page at <http://bvnaoise.org/page8.html>. Alternatively, please talk with any one of the board members at the monthly meeting which is open to all. Thank you for joining our community, and helping make the Barber Valley one of the best places to live in Boise!

### **The BNVA Board**

*John Mooney Jr (Riverland East-Wade): President*  
*Steve Moore (Dallas Harris Estates): Vice-President*  
*Gary Veasy (River Heights): Secretary*  
*Hank Vincent (Riverland East-East Valley): Treasurer*

Stasi Bellomy (Riverland East-Brian)  
Larry Crowley (Barber Junction)  
Sabrina Durtschi (Riverland East-East Valley)  
Celeste Miller (Dallas Harris Estates)  
Kay Nice (River Heights)  
Rob Stark (Riverland East-Rim at East Valley)